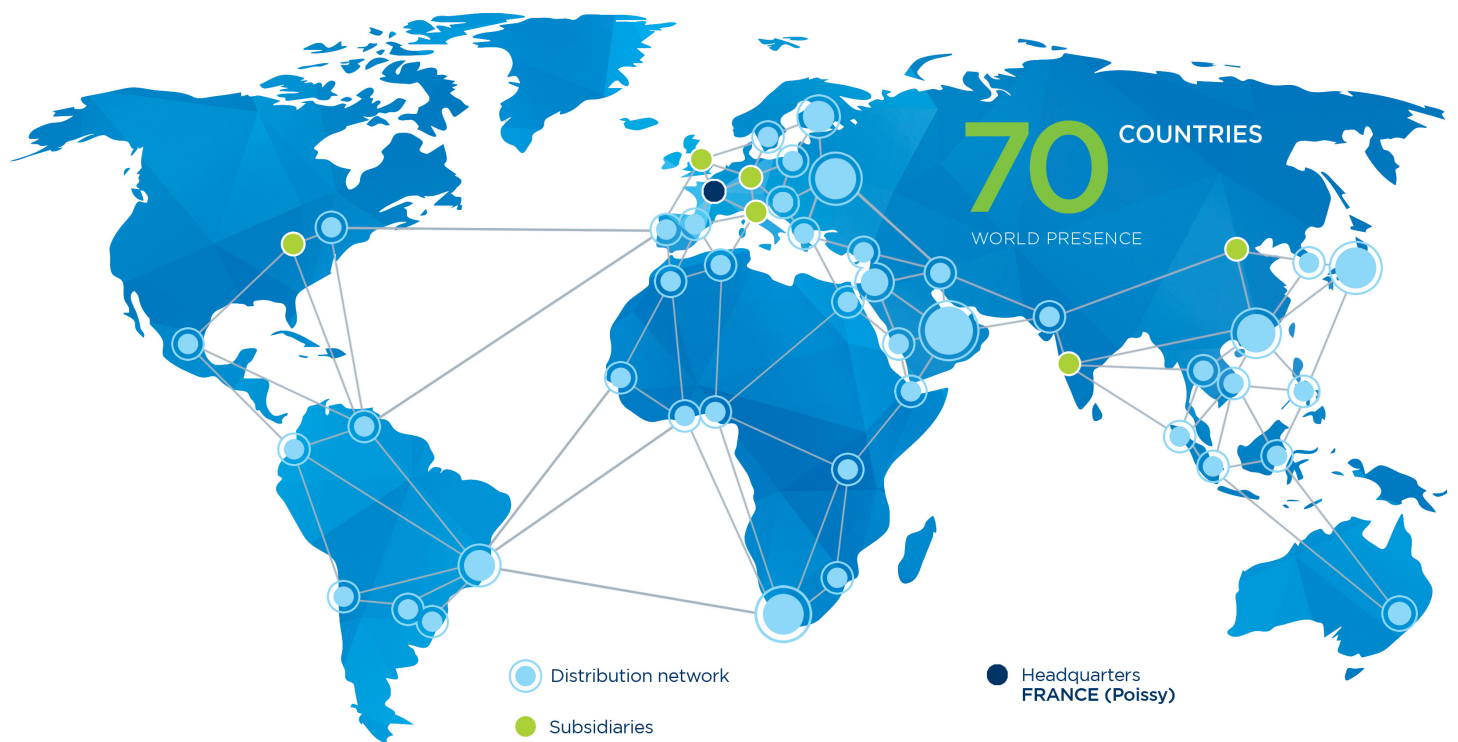


# A strong global presence:

Faithful to the principles on which it was founded – innovation & quality, social responsibility & shared values – the ENVEA group is committed to providing you with solutions and assistance at the highest standards in order to comply with applicable regulations; as well as the optimization of industrial processes for an improved efficiency, significant savings of raw materials & energy, the reduction of environmental impacts...



Our worldwide references guarantee a perfect understanding of your needs and ability to manage a vast range of applications:

More than 35 000 air quality monitors are measuring the pollution of cities worldwide: Rio de Janeiro, Istanbul, Seoul, Mecca, Delhi, Hanoi, Paris, Budapest, Abu Dhabi, Bangkok, Dakar, Beijing...

Over 25 000 emission sources & processes are monitored worldwide across a broad range of industries such as: cement plants, glass manufacturing, metal factories, papermills, engine manufacturers, waste to energy plants...



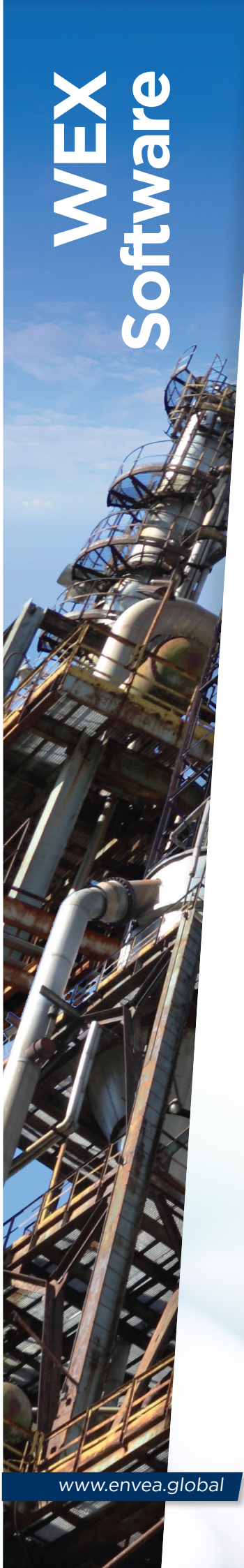
**ENVEA Data Management Solutions**  
230 Allée Théodore Monod - Technopole Izarbel  
64210 BIDART - FRANCE  
☎ +33(0)5 59 41 55 66  
✉ info.data@envea.global

**ENVEA Headquarters**  
111 bd Robespierre / CS 80004  
78304 POISSY CEDEX 4 - FRANCE  
☎ +33(0)1 39 22 38 00  
✉ info@envea.global

Visit us on:  
[www.envea.global](http://www.envea.global)



Typical specifications subject to changes without prior notice



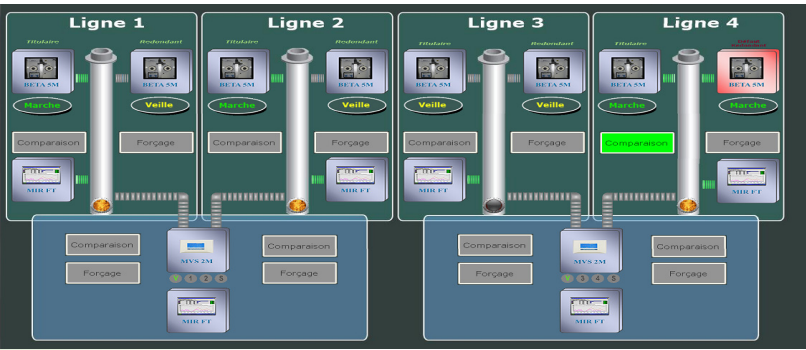
# Emissions monitoring system

Environmental data acquisition and processing



With more than 40 years of experience in the manufacture of air quality monitoring systems, ENVEA offers WEX software for regulatory monitoring of emissions and in full compliance with regulations in force regardless of the type of industry subject to control and monitoring of its industrial emissions.

The WEX software is composed of several modules allowing to qualify, process and analyze the data coming from the different equipments. For example, WEX software monitors emissions in real time and calculates trends to warn operators and anticipate any limit value violations. Thanks to the automated report editing module, the operator receives by e-mail, daily or weekly reports in compliance with regulations to be able to carry out a detailed analysis of events. Finally, unique modules for quality assurance (QA) and quality control (QC) are available to monitor instrumentation and calibrations.



Compliance with:

- > EN 14181 (QAL 2, QAL 3)
- > IED 2010/75/UE
- > Certified MCERTs n° MC 150271/00





## DATA ACQUISITION

- More than 200 communication protocols available, including Modbus and TCP/IP
- Calculations (scaling, adjustment, linearization, standardization); data aggregation on various time periods
- Data storage (raw, validated, aggregated) in a database
- DCS connection (Modbus, OPC)

## SUPERVISION

- System status display
- Multi-window representation (slideshow)
- Data display: raw, means, trends, graphs...
- Monitoring and control of redundant equipment
- Analyzers management locally or remotely: real-time graphic follow-up, interactive set-up, calibration and automatic results monitoring, remote testing ...

## REPORT MANAGEMENT

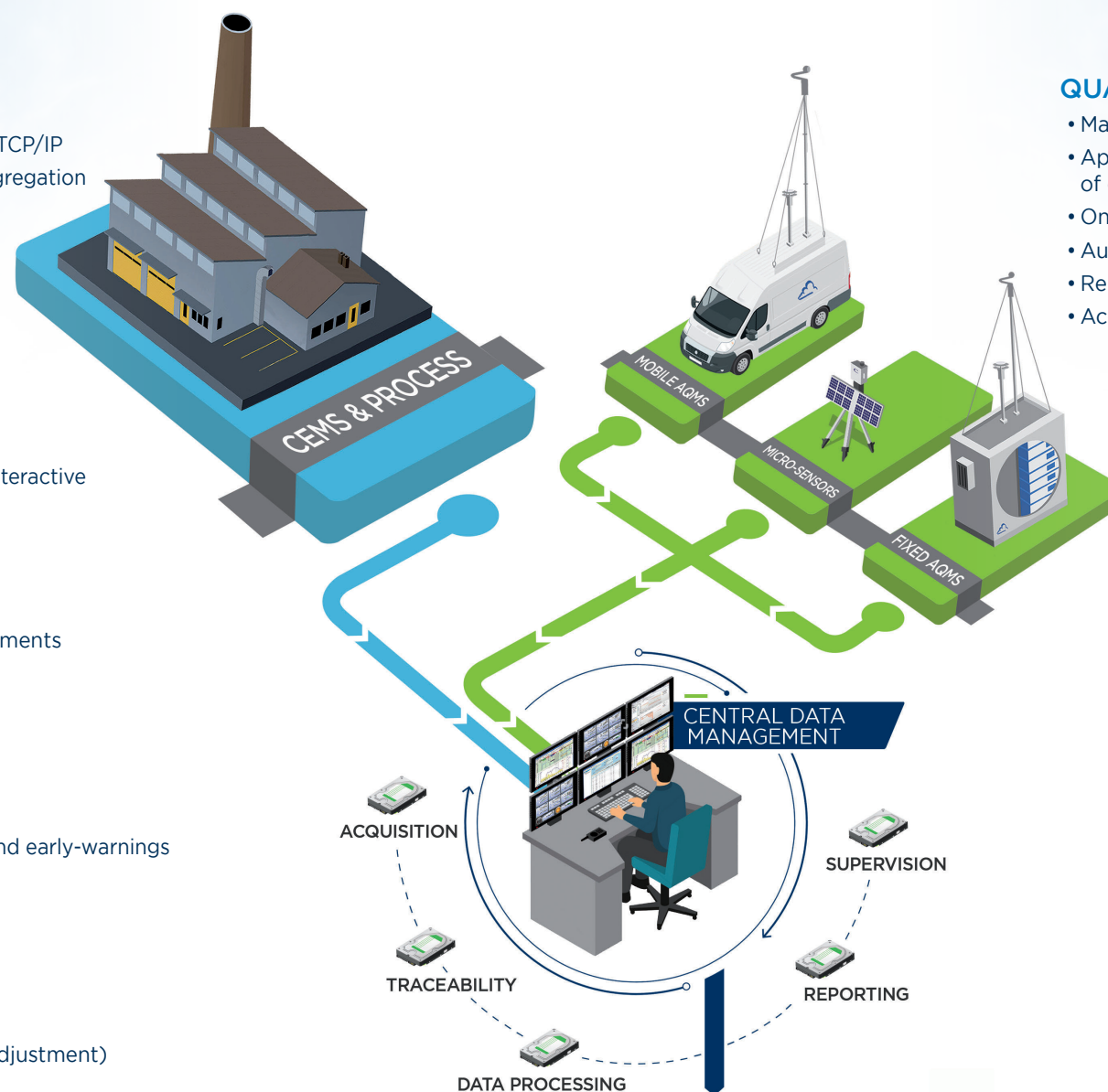
- Automatic output of reports in accordance with local authorities requirements
- Data export in various file formats: Excel, XML, HTML, PDF, CSV...

## REGULATORY CONTROLS

- Real-time monitoring of parameters, overruns and means
- Detection of ELVs overruns and devices unavailabilities
- Recording of overruns duration and transmission to supervision of alerts and early-warnings

## DATA VALIDATION

- Automatic quality audit: maintenance, calibration, drift, alerts, defaults...
- Tables and/or graphs display
- Several validation levels with respective rights
- Traceability by recording any user action (data validation, invalidation, adjustment)



## QUALITY ASSURANCE

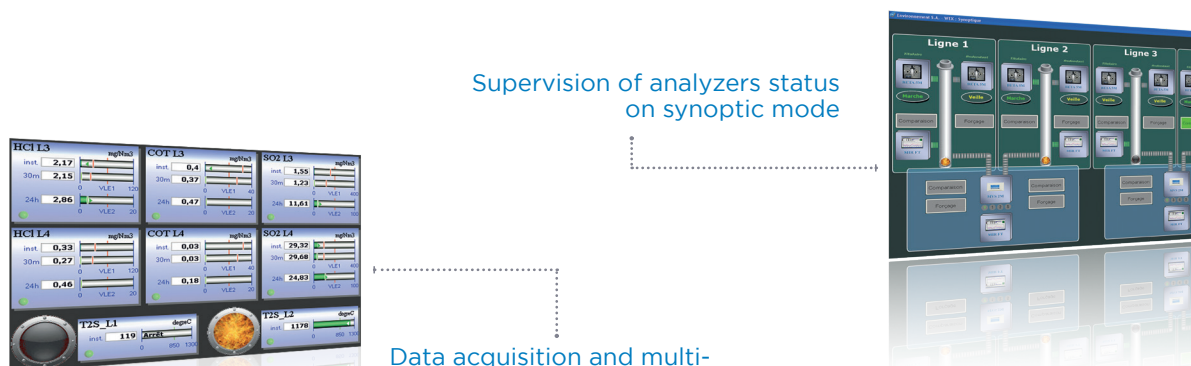
- Management of the calibration function in conformity with EN 14181 standard
- Application of calibration function on dry data, wet data... input of the  $ax^2+bx+c$  function of each measurement channel
- Online parameters modification and successive history settings back-up
- Automatic marking of data out of their validity domain (overrun periods)
- Reports generation, automatically and manually
- Access to unmodified raw data

## BACKUP SYSTEM

- Automatic backup management of the WEX™ system on a separate computer
- In case of failure on the main system, the WEX™ system automatically switches to the backup system and provides exactly the same possibilities for acquisition and processing with no loss of data

## QAL3

- Automatic QAL3 calibration, compliant with EN 14181 standard
- Automatic analysis and results checking
- Three different control cards available simultaneously and automatically for each analyzer : CUSUM (NFX06-031-4), EWMA (NFX06-031-3) and Shewart (ISO 8258)
- Charts display to track calibration verification and data history
- Storage in database of every information, data, messages for reports editing
- Assignment of a quality code for raw and average data (e.g. maintenance, calibration, drift, alert, failures...)



Data acquisition and multi-screen real-time display of parameters

QAL2 Calibration functions management: settings and application of the coefficients

Data validation module



Remote data display through a Web interface

Control charts



Regulatory and operating reports management, automatic or manual editing

Regulatory parameters display

