

# PROCESS

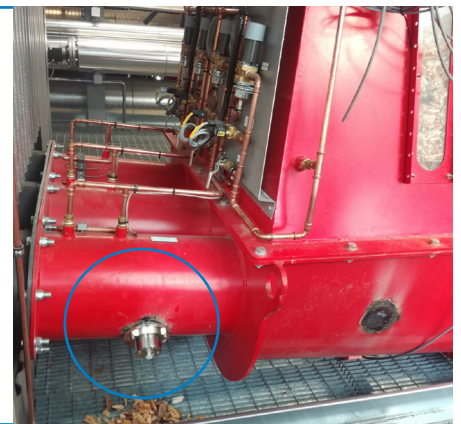
## Moisture measurement of wood chips with M-Sens

### APPLICATION

In a biomass power plant, the combustion of biomass generates electricity and heat. The operator of a biofuel plant was looking for a solution that would provide him with information on the moisture content of the biomass (wood chips) before transportation into the combustion chamber in order to optimally adjust the combustion air.

### PROCESS DATA

Customer:	Biogas plant
Product:	Wood chips
Moisture range:	20 – 60 %
Installation:	After the shredding machine
Function:	Measuring the moisture of wood chips



### SOLUTION

The M-Sens continuously measures the material moisture of all kinds of solids in container outlets, conveyor belts, screw conveyors, mixers and belt dryers.

In the described application the M-Sens WR is used.

The M-Sens WR is especially used for coarser materials and for higher moisture values.

For applications with wood dusts with a lower moisture value the standard M-Sens is used.

Typical installation locations are e. g. in a silo outlet or in a screw conveyor.



**M-Sens**

### CUSTOMER BENEFITS

- Optimal control of the combustion air
- Reduction of fuel consumption
- Process optimization

**Monitoring for Powder, Dust & Gas**